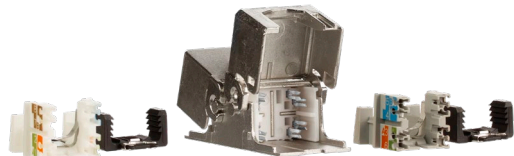


net-works kvc-ead 180
net-works kvc-eaw 270
net-works kvc-eaw 360
AWG 26/1 - 22/1, AWG 26/7 - 22/7

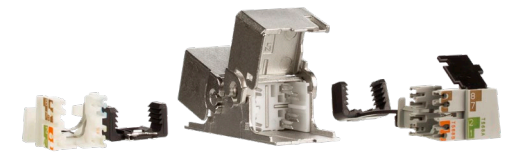
- (DE) Montagehinweis
- (EN) Mounting note
- (FR) Notice d'installation



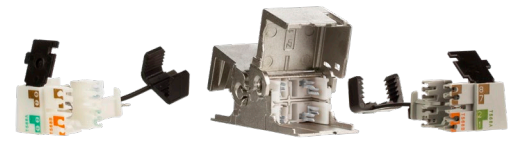
2810876 | 180°



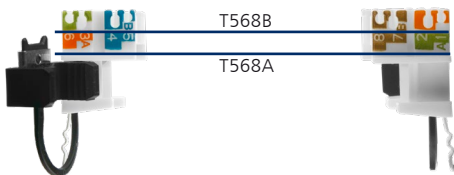
2810877 | 270°



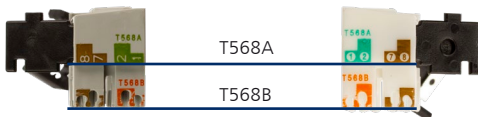
2810878 | 360°



(DE) gerade (EN) straight (FR) droit

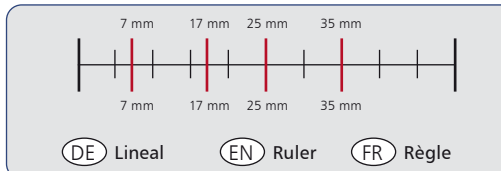
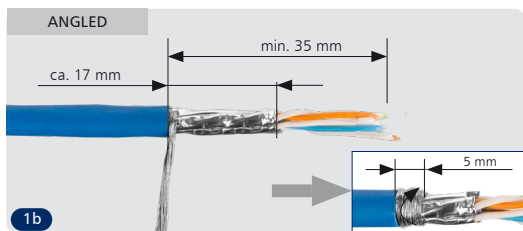
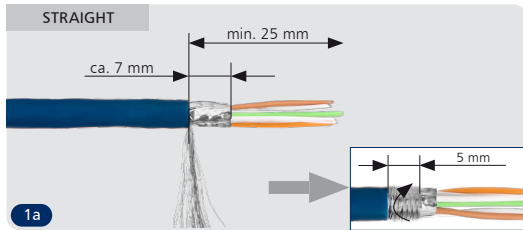


(DE) gewinkelt (EN) angled (FR) coudée



1

(DE) Kabelkonfektion (EN) Cable preparation (FR) Préparation du câble



(DE) Lineal (EN) Ruler (FR) Règle

i HINWEIS / NOTE / NOTICE

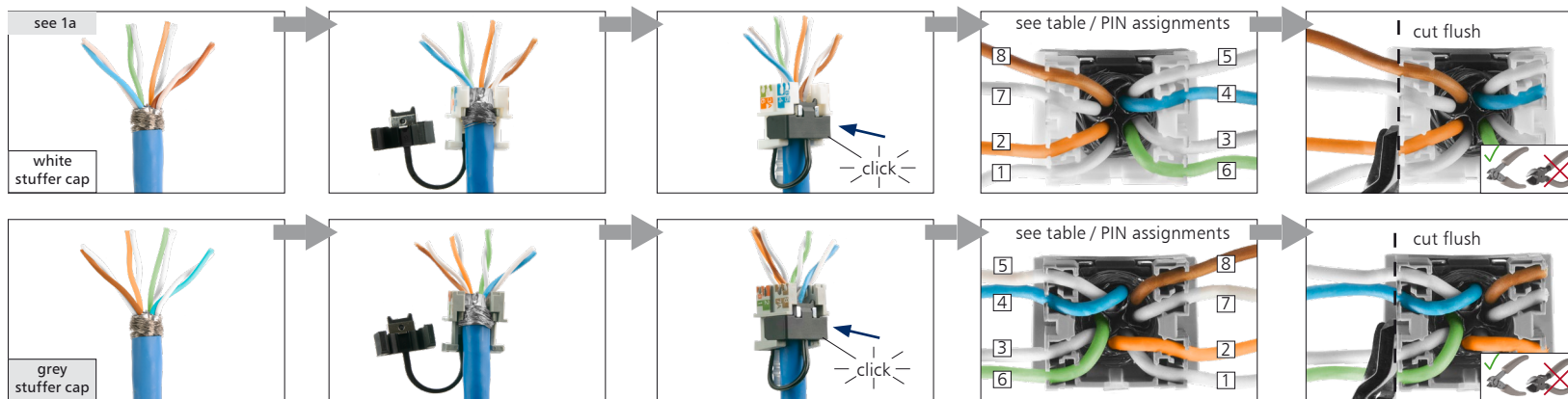
- (DE) **Kabel AWG 26!**
Folienschirm 5 mm kürzer abschneiden. Schirmgeflecht 5 mm über den Kabelmantel aufbringen.
- (EN) **Cable AWG 26!**
Cut the foil shield 5 mm shorter. Wrap the braided shield 5 mm over the cable sheath.
- (FR) **Câble AWG 26 !**
Raccourcir les feuillets de blindage de 5 mm. Enrouler la tresse de blindage 5 mm sur la gaine de câble.

Anschlussbelegung PIN assignments Affectation des fils aux contacts

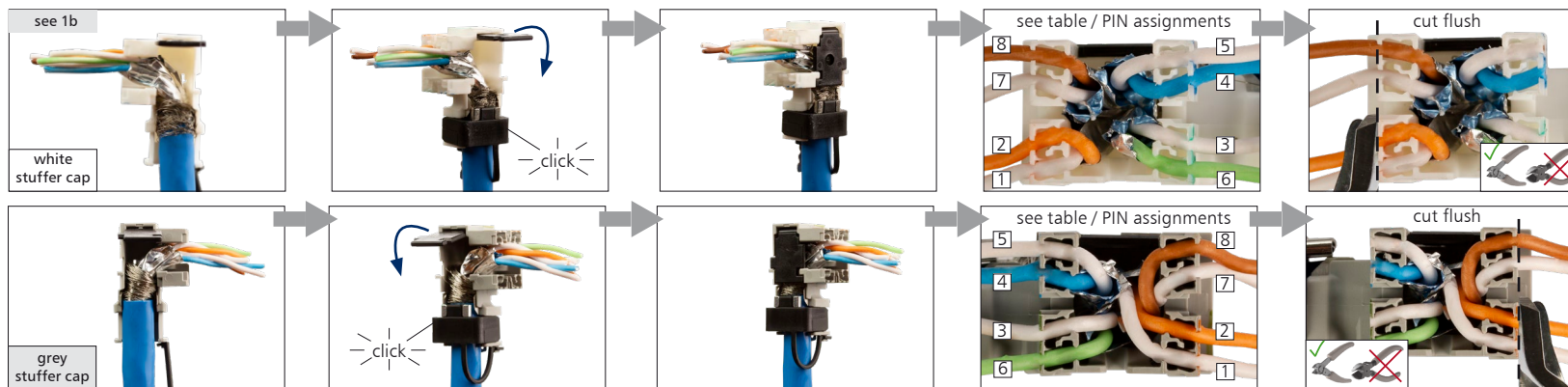
PIN Nr. No. contact no.	T568A	T568B	Profinet
1	WH-GN	WH-OG	YE
2	GN	OG	OG
3	WH-OG	WH-GN	WH
4	BU	BU	-
5	WH-BU	WH-BU	-
6	OG	GN	BU
7	WH-BN	WH-BN	-
8	BN	BN	-

2

(DE) Gerades Ladestück für 180° & 270° (EN) Straight stuffer cap for 180° & 270° (FR) Chargeur droit pour 180° & 270°



(DE) Gewinkeltes Ladestück für 270° & 360° (EN) Angled stuffer cap for 270° & 360° (FR) Chargeur droit pour 270° & 360°



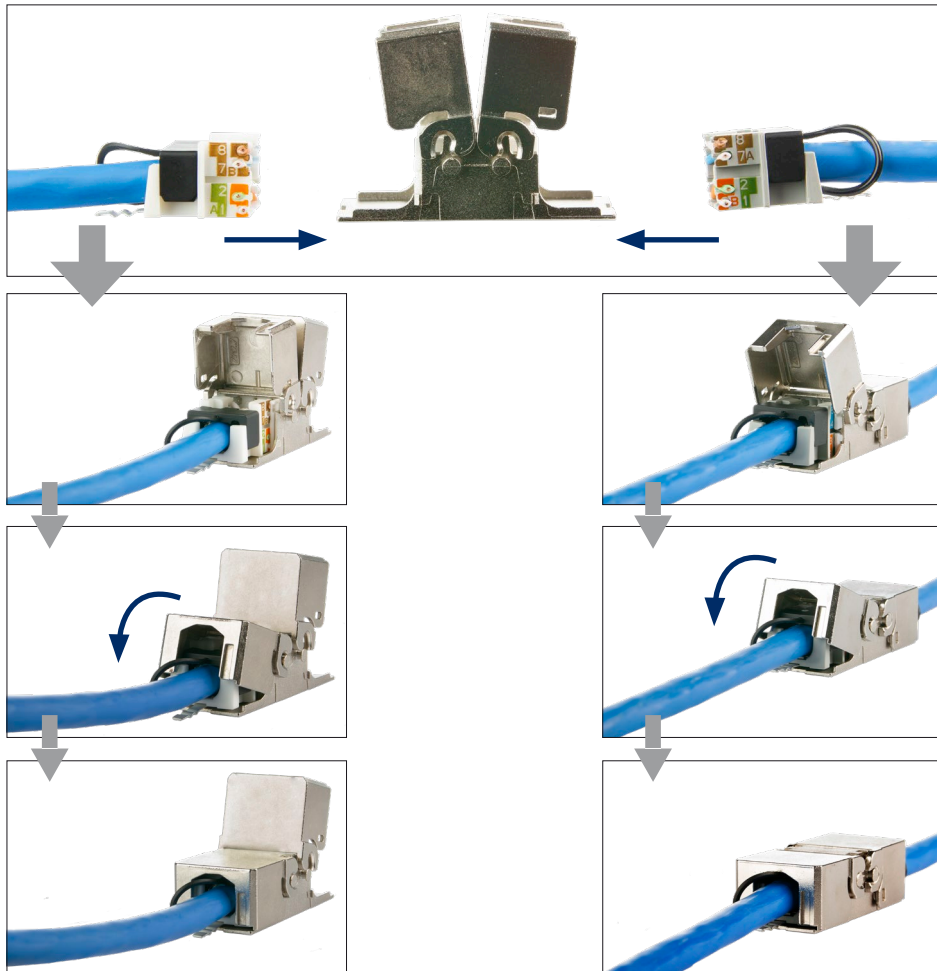
i HINWEIS / NOTE / NOTICE

- (DE) Anschlussfehler vermeiden!
Vor dem Anschluss Montageanleitung sorgfältig lesen!
- (EN) Avoid connection errors!
Read installation instructions carefully before connecting!
- (FR) Eviter des erreurs de raccordement!
A lire attentivement avant de procéder au raccordement!

3

(DE) Anschluss Kabelverbinder (EN) Connection Cable connector

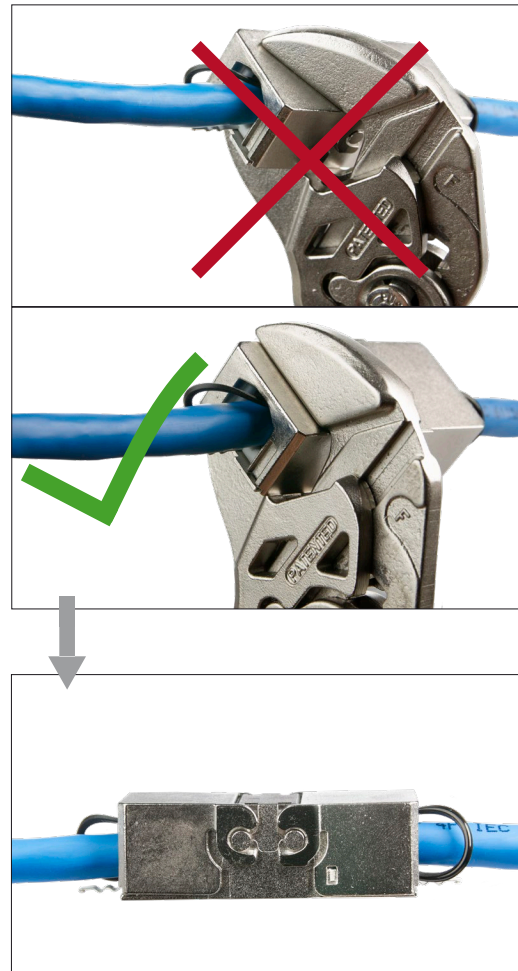
(FR) Raccordement Connecteur de câbles



(DE) Schließen bei Verwendung von Werkzeug

(EN) Closing by using a tool

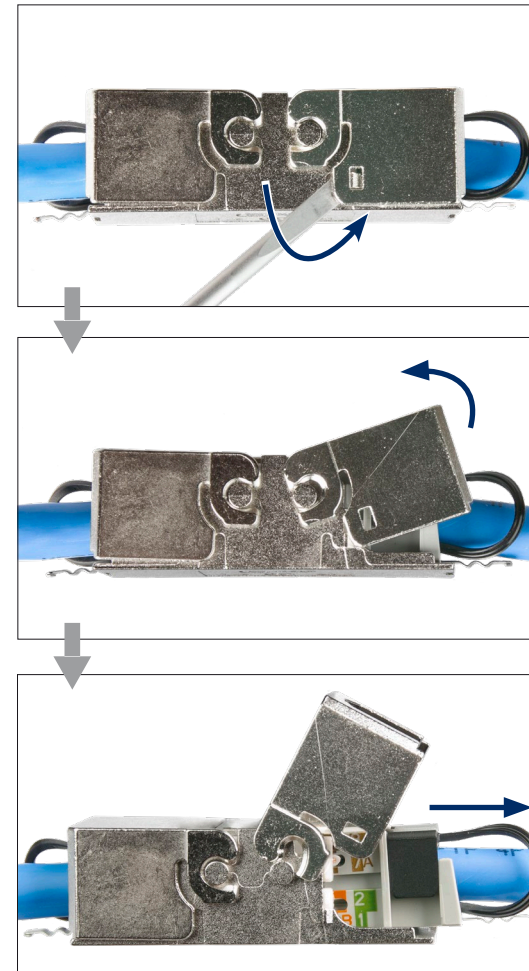
(FR) Fermeture en utilisant un outil



Disassembly

(DE) Demontage

(FR) Démontage



i HINWEIS / NOTE / NOTICE



(de) Bestimmungsgemäßer Gebrauch:
Kabelverbinder für anwendungsneutrale
Kommunikationskabelanlagen nach
M111C1E2.

(en) Intended use:
Cable connector for application-neutral
communication cable systems according to
M111C1E2.

(fr) Utilisation conforme à l'usage prévu :
Connecteur de câbles pour installations de
câbles de communication neutres en termes
d'application selon M111C1E2.